

ICAO – INSTRUMENT APPROACH CHART

REMARK:
 Localizer course is off set
 1.52' from RWY center line.

APP *Genova Approach TWR Genova Tower*
 119.6 118.6
Genova Radar
 119.6 (119.85)

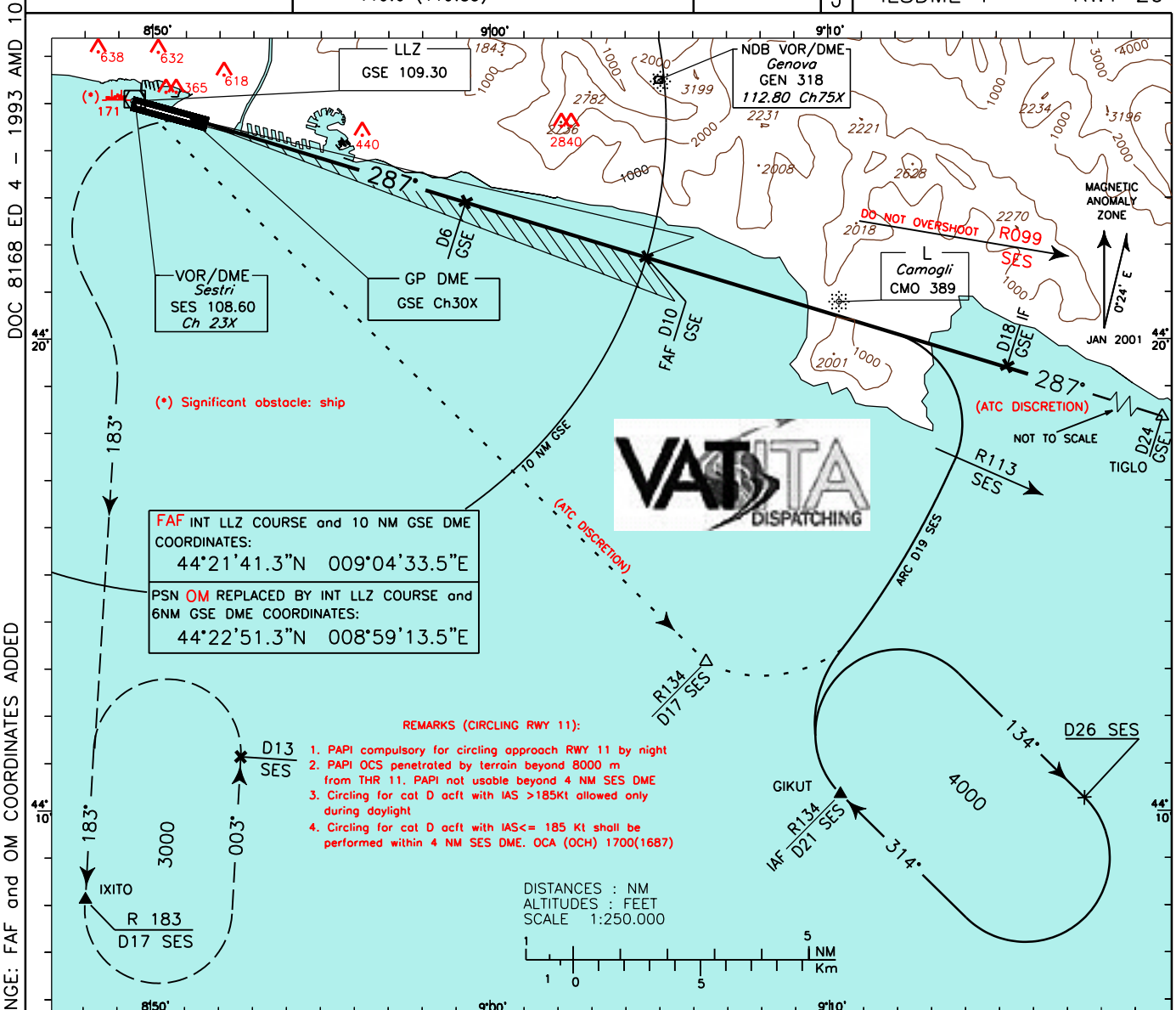
AD ELEV
 13

L
 I
 M
 J

GENOVA/SESTRI

ILSDME-P

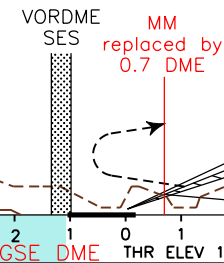
RWY 29



TRANSITION ALT 7000

MISSED APPROACH: On MAPT turn left as soon as practicable (IAS MAX 200 KT) to join and follow RDL 183 SES VOR (TR 183°) climbing to 3000 ft and proceed to IXITO (RDL 183°/17 NM SES VORDME) holding pattern.

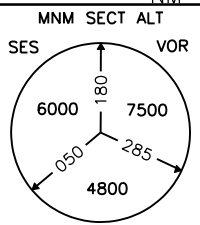
RDH 17 M
 GP 3.17°



OCA(OCH)		A	B	C	D
STRAIGHT IN APPROACH	ILSDME	469(458)	479(468)	489(478)	499(488)
	GP INOP	VEDI LLZDME-P / SEE LLZDME-P			
CIRCLING		700(687)	760(747)	1360(1347)	2860(2847) (3) (4)

SEE REMARKS 1, 2, 3 and 4
CIRCLING
 NOT ALLOWED
 allowed only south of the RWY

GS	FT PER MIN	D6-D0.7		D0.7-THR	
		5.3 NM	0.52 NM		
80	448	3:59	0:23		
100	560	3:11	0:19		
120	672	2:39	0:16		
140	784	2:16	0:13		
160	896	1:59	0:12		
180	1008	1:46	0:10		



ICAO - INSTRUMENT APPROACH CHART

WARNING:

The LLZ course is off-set 1.52° from RCL and aligned lightly South of CMO L. Therefore, its interception at 4500 Ft will occur before reaching that point.

APP *Genova Approach TWR Genova Tower*
 119.6 118.6
Genova Radar
 119.6 (119.85)

AD ELEV
 13

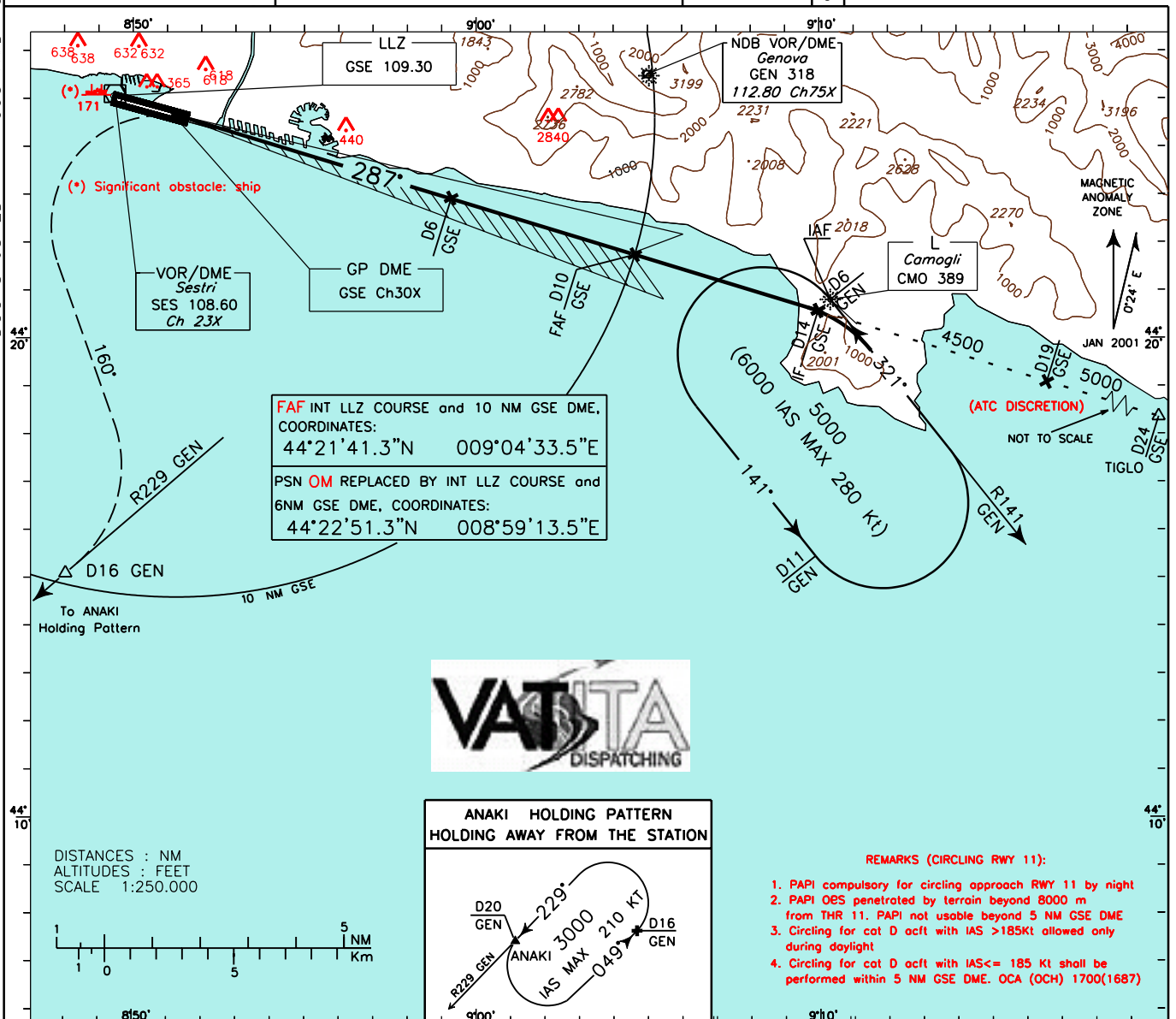
L
 I
 M
 J

GENOVA/SESTRI

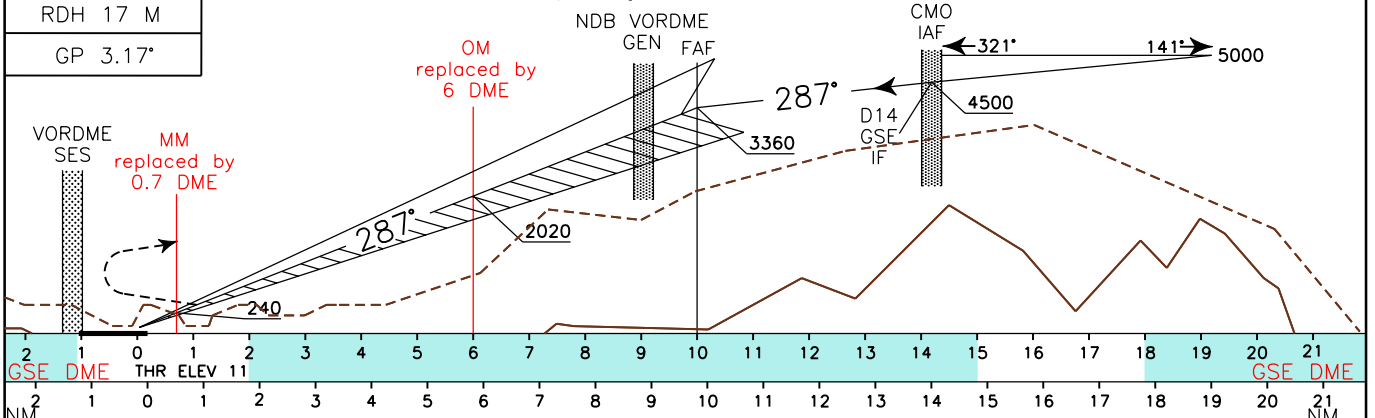
ILSDME-S

RWY 29

DOC 8168 ED 4 - 1993 AMD 10
 CHANGE: FAF and OM COORDINATES ADDED



TRANSITION ALT 7000
MISSED APPROACH: On MAPT turn left as soon as practicable (IAS MAX 200 KT) on heading 160° to join and follow R229 GEN VORDME (TR 229°) climbing to 3000 ft and proceed to ANAKI (RDL 229/20 NM GEN VORDME) holding pattern.



STRAIGHT IN APPROACH	OCA(OCH)				SEE REMARKS 1, 2, 3 and 4 CIRCLING NOT ALLOWED allowed only south of the RWY	MINIMUM SECT ALT			
	A	B	C	D		GS	FT PER MIN	D6-0.7	D0.7-THR
ILSDME	469(458)	479(468)	489(478)	499(488)	80	448	3:59	0:23	
	VEDI LLZDME-S / SEE LLZDME-S				100	560	3:11	0:19	
GP INOP					120	672	2:39	0:16	
					140	784	2:16	0:13	
					160	896	1:59	0:12	
CIRCLING	700(687)	760(747)	1360(1347)	2860(2847) (3) (4)	180	1008	1:46	0:10	