

ICAO - INSTRUMENT APPROACH CHART

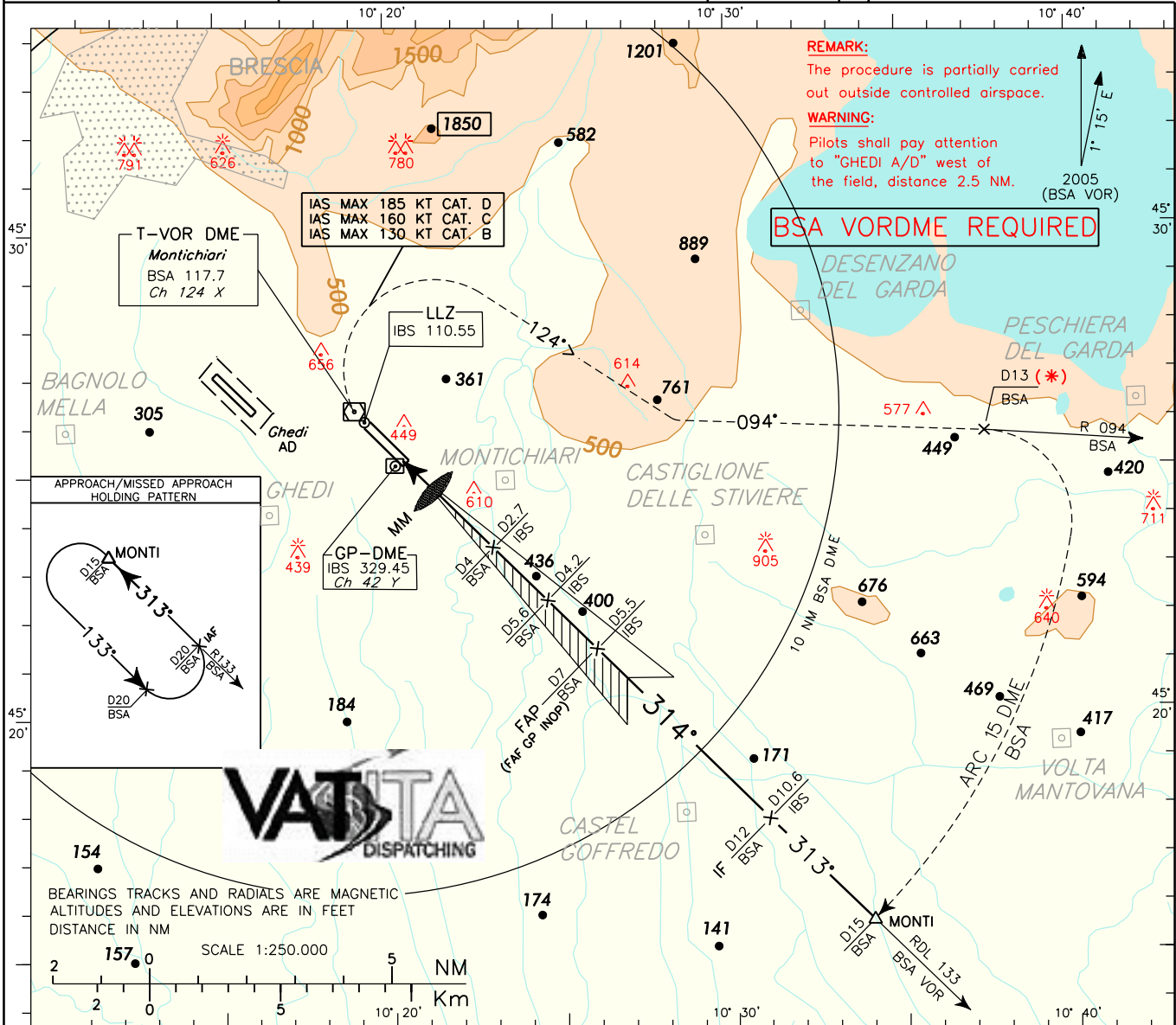
(*) WARNING: In case of ATC necessities perform climbing with MNM climb gradient 250 FT/NM (4.4%) to cross point R 094/13 NM BSA at 5000 FT or above.

APP	Garda Approach	TWR	Montichiari Tower
	135.90 124.25		119.40
	118.55		

AD ELEV
356

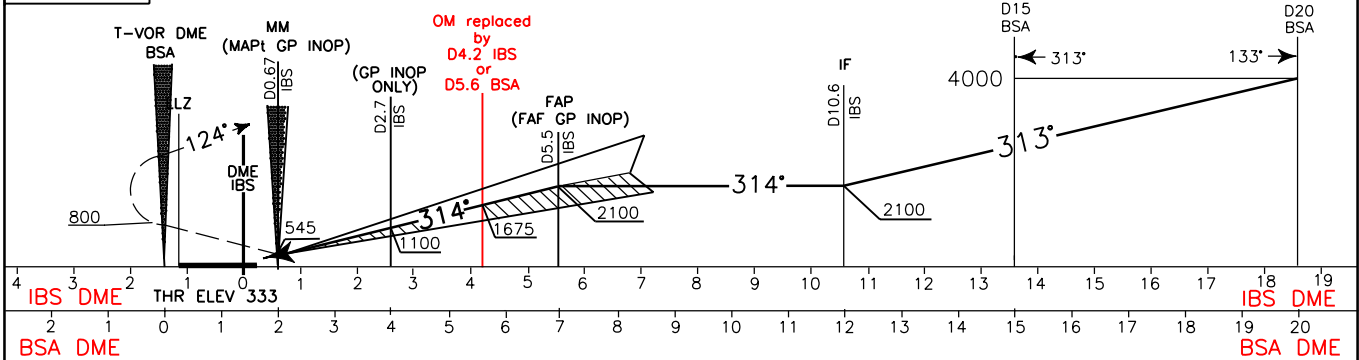
BRESCIA/MONTICHIARI
CAT. I II & III
ILS
RWY 32

DOC. 8168 ED.4-1993 AM.13
CHANGE: Revised chart due to "IBS" DME installation.



TRANSITION ALT 6000 MISSED APPROACH: Proceed on TR 314° climbing to 4000 Ft. At 800 Ft turn right on TR 124° to join R 094 BSA. At 13 NM BSA DME turn right to follow 15 DME BSA arc to MONTI holding pattern.

RDH	17 M
GP	3'
GP INOP	5.24%



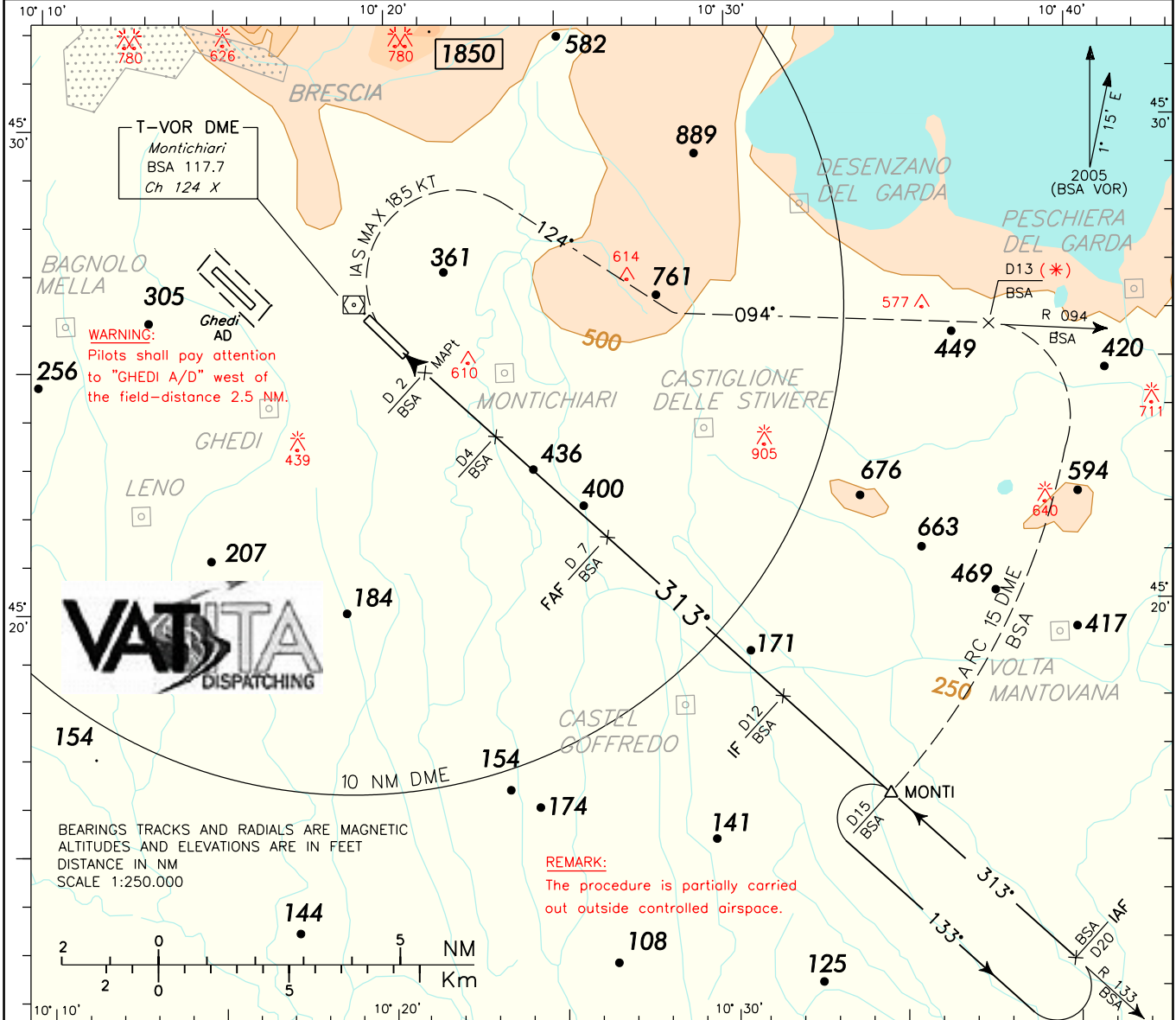
STRAIGHT IN APPROACH	MISSED APPROACH GRADIENT 2.5%				CIRCLING SECTOR	GS	FT PER MIN	IBS DME	ALTITUDE (HEIGHT)	MSA BSA 25 NM
	A	B	C	D						
ILS CAT. I	533(200)	533(200)	613(280)	not applicable		180	956	D5.5	2100 (1770)	
ILS CAT. II	433(100)	443(110)	533(200)	not applicable		150	797			
LLZ+DME	750(420)					130	690	D3	1300 (960)	
ILS CAT. I	533(200)					110	584	D2	970 (640)	
ILS CAT. II	433(100)				90	478	D1	650 (320)		
ILS CAT. III	356(23)				70	372	D1	650 (320)		

ICAO - INSTRUMENT APPROACH CHART

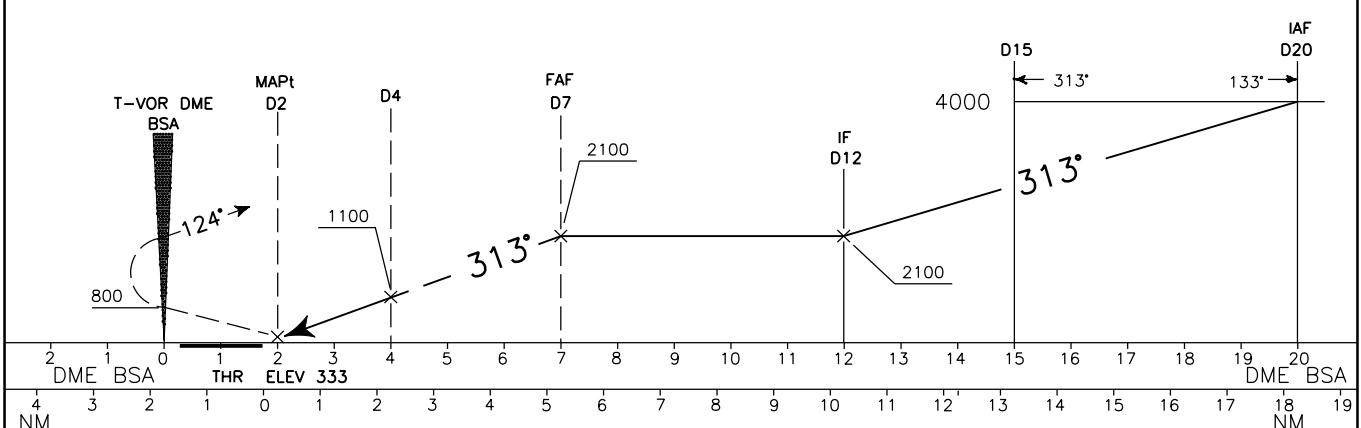
(*) WARNING: In case of ATC necessities perform climbing with MNM climb gradient 250 FT/NM (4.4%) to cross point R 094/13 NM BSA at 5000 FT or above.	APP <i>Garda Approach</i>	TWR <i>Montichiari Tower</i>	AD ELEV	L I P O BRESCIA/MONTICHIARI (ATC DISCRETION) VOR+DME-P RWY 32
	124.45 124.25	119.40	356	
	118.55			

DOC.8168-ED.3-1986

CHANGE: Revised procedure



TRANSITION ALT 6000 MISSED APPROACH: Proceed on track 313° climbing to 4000 Ft. At 800 Ft turn right on track 124° to join RDL 094 BSA VOR. At 13 DME BSA turn right to follow 15 DME BSA arc to MONTI holding pattern. Execute missed approach turns at IAS max 185 KT.



OCA (OCH)		A	B	C	D	CIRCLING SECTOR 	FT PER MIN GS	MSA BSA 25 NM 	
STRAIGHT IN APPROACH	VOR+DME	750 (420)							
CIRCLING		890 (534)	950 (594)	1110 (754)	2000(1644)				