

CHANGE: NEW AD SECTION

STAR ATC DISCRETION RWY 16L/C/R	ROMA/ FIUMICINO	CMP Holding Pattern	LAT Holding Pattern	TAQ Holding Pattern
	TRANSITION ALT 6000			
			ROM Holding Pattern	BOL Holding Pattern

* Radar minima 3000 ft available for Fiumicino RWY 16L/R approaches only, otherwise 4000 FT.

REMARKS:
 (1) For all routes not specifically BRNAV, reported MEL/MEA are referred to conventional navigation.
 For BRNAV navigation (overlay) radar minima (MRVA) apply.
 (2) For details on holding patterns see ENR 3. For compulsory STARs: see IACs in force.

AIRSPACE CLASSIFICATION

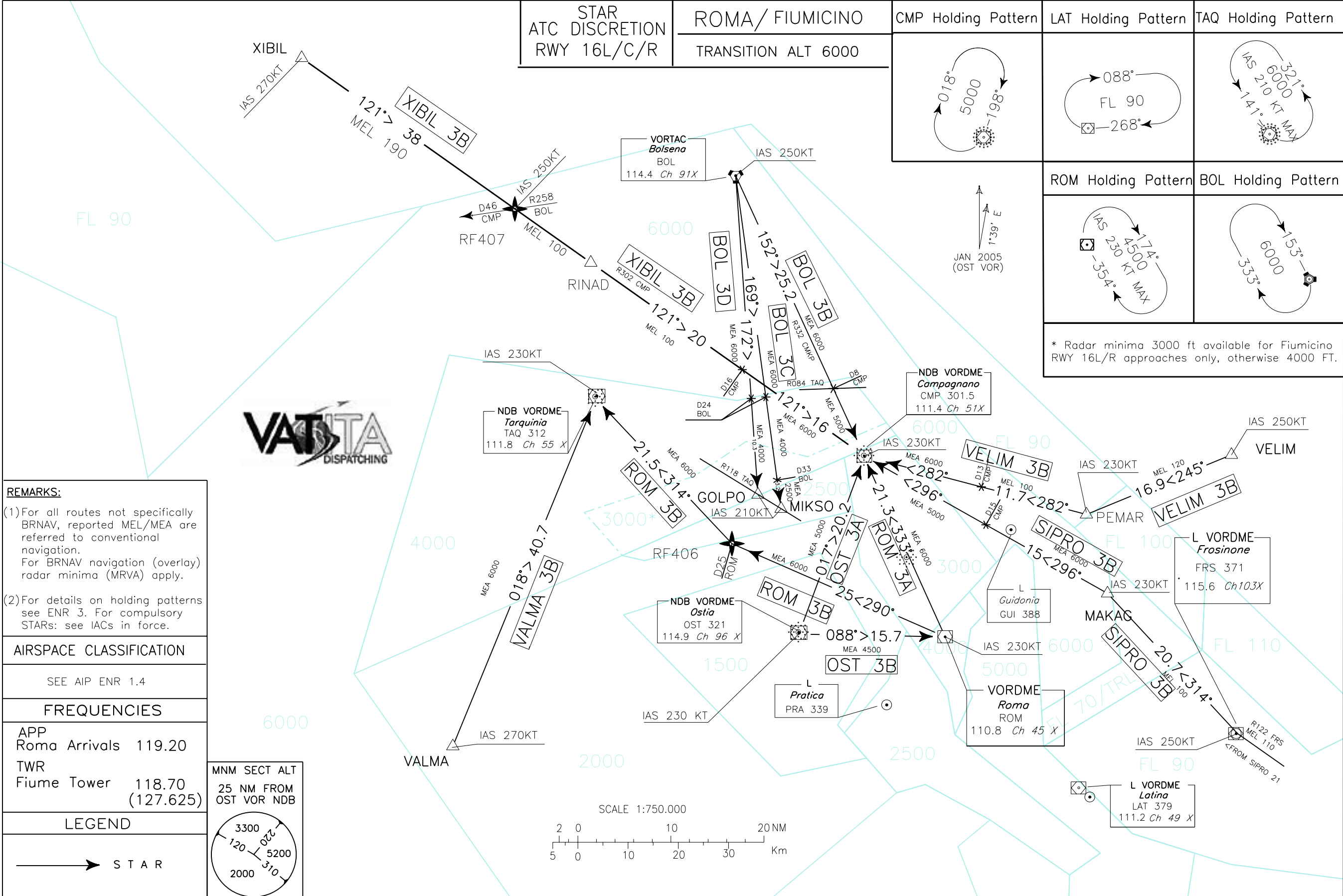
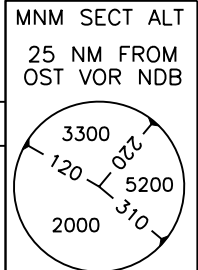
SEE AIP ENR 1.4

FREQUENCIES

APP
 Roma Arrivals 119.20
 TWR
 Fiume Tower 118.70
 (127.625)

LEGEND

→ STAR



STAR RWY16 (ATC Discretion)

In aggiunta alle LINK ROUTES, quando le RWYs 16 sono in uso, sono disponibili a discrezione ATC solo le seguenti STAR.
In addition to the LINK ROUTES, when RWYs 16 are in use, only following STAR are available at ATC discretion.

XIBIL 3B

XIBIL – RF407 – RINAD – CMP VOR/DME.

MEL/MEA: XIBIL – RF407⁽²⁾; FL 190; RF407⁽²⁾ – RINAD – RDL 301/D16 CMP VOR/DME: FL 100; RDL 301/D16 CMP VOR/DME – CMP VOR/DME: 6000 FT

Path Terminator	Waypoint Name	Track °Mag	Turn Direction	Altitude Constraint	Speed Limit	Recommended Navaid	Bearing/Range to Navaid	Navigation Performance
IF	XIBIL	-	-	-	270	-	-	B-RNAV ⁽¹⁾ or Conventional
TF	RF407	121°	-	-	250	-	-	B-RNAV ⁽¹⁾ or Conventional
TF	RINAD	121°	-	-	250	-	-	B-RNAV ⁽¹⁾ or Conventional
HM	CMP	121°	-	-	230	-	-	B-RNAV ⁽¹⁾ or Conventional

⁽¹⁾ P-RNAV recommended⁽²⁾ For conventional navigation performance RF407 is replaced by RDL 302/D46 CMP VOR/DME or INT RDL 258 BOL VOR/RDL 302 CMP VOR**VALMA 3B**

VALMA – TAQ VOR/DME.

MEA: VALMA – TAQ VOR/DME: 6000 FT

Path Terminator	Waypoint Name	Track °Mag	Turn Direction	Altitude Constraint	Speed Limit	Recommended Navaid	Bearing/Range to Navaid	Navigation Performance
IF	VALMA	-	-	-	270	-	-	B-RNAV ⁽¹⁾ or Conventional
HM	TAQ	018°	-	-	230	-	-	B-RNAV ⁽¹⁾ or Conventional

⁽¹⁾ P-RNAV recommended**VELIM 3B**

VELIM – PEMAR – CMP VOR/DME.

MEL/MEA: VELIM – PEMAR: FL 120; PEMAR – RDL 101/D13 CMP VOR/DME: FL 100; RDL 101/D13 CMP VOR/DME – CMP VOR/DME: 6000 FT

Path Terminator	Waypoint Name	Track °Mag	Turn Direction	Altitude Constraint	Speed Limit	Recommended Navaid	Bearing/Range to Navaid	Navigation Performance
IF	VELIM	-	-	-	250	-	-	B-RNAV ⁽¹⁾ or Conventional
TF	PEMAR	245°	R	-	230	-	-	B-RNAV ⁽¹⁾ or Conventional
HM	CMP	282°	-	-	230	-	-	B-RNAV ⁽¹⁾ or Conventional

⁽¹⁾ P-RNAV recommended**ROM 3A**

ROM VOR/DME – CMP VOR/DME.

MEA: ROM VOR/DME – CMP VOR/DME: 6000 FT

Path Terminator	Waypoint Name	Track °Mag	Turn Direction	Altitude Constraint	Speed Limit	Recommended Navaid	Bearing/Range to Navaid	Navigation Performance
IF	ROM	-	-	-	230	-	-	B-RNAV ⁽¹⁾ or Conventional
HM	CMP	333°	-	-	230	-	-	B-RNAV ⁽¹⁾ or Conventional

⁽¹⁾ P-RNAV recommended

ROM 3BROM VOR/DME – RF406⁽²⁾ – TAQ VOR/DME.MEA: ROM VOR/DME – RF406⁽²⁾ – TAQ VOR/DME: 6000 FT

Path Terminator	Waypoint Name	Track °Mag	Turn Direction	Altitude Constraint	Speed Limit	Recommended Navaid	Bearing/Range to Navaid	Navigation Performance
IF	ROM	-	-	-	230	-	-	B-RNAV ⁽¹⁾ or Conventional
TF	RF406	290°	R	-	230	-	-	B-RNAV ⁽¹⁾ or Conventional
HM	TAQ	314°	-	-	230	-	-	B-RNAV ⁽¹⁾ or Conventional

⁽¹⁾ P-RNAV recommended⁽²⁾ For conventional navigation performance RF406 is replaced by RDL 290/D25 ROM VOR/DME**BOL 3B**

BOL VORTAC – CMP VOR/DME.

MEA: BOL VORTAC – RDL 332/D8 CMP VOR/DME: 6000 FT; RDL 332/D8 CMP VOR/DME – CMP VOR/DME: 5000 FT

Path Terminator	Waypoint Name	Track °Mag	Turn Direction	Altitude Constraint	Speed Limit	Recommended Navaid	Bearing/Range to Navaid	Navigation Performance
IF	BOL	-	-	-	250	-	-	B-RNAV ⁽¹⁾ or Conventional
HM	CMP	152°	-	-	230	-	-	B-RNAV ⁽¹⁾ or Conventional

⁽¹⁾ P-RNAV recommended**BOL 3C**

BOL VORTAC – MIKSO.

MEA: BOL VORTAC – RDL 169/D24 BOL VORTAC: 6000 FT; RDL 169/D24 BOL VORTAC – RDL 169/D33 BOL VORTAC: 4000 FT; RDL 169/D33 BOL VORTAC – MIKSO: 2500FT

Path Terminator	Waypoint Name	Track °Mag	Turn Direction	Altitude Constraint	Speed Limit	Recommended Navaid	Bearing/Range to Navaid	Navigation Performance
IF	BOL	-	-	-	250	-	-	B-RNAV ⁽¹⁾ or Conventional
TF	MIKSO	169°	-	-	210	-	-	B-RNAV ⁽¹⁾ or Conventional

⁽¹⁾ P-RNAV recommended**BOL 3D**

BOL VORTAC – GOLPO.

MEA: BOL VORTAC – RDL 172/D24 BOL VORTAC: 6000 FT; RDL 172/D24 BOL VORTAC – GOLPO: 4000 FT

Path Terminator	Waypoint Name	Track °Mag	Turn Direction	Altitude Constraint	Speed Limit	Recommended Navaid	Bearing/Range to Navaid	Navigation Performance
IF	BOL	-	-	-	250	-	-	B-RNAV ⁽¹⁾ or Conventional
TF	GOLPO	172°	-	-	210	-	-	B-RNAV ⁽¹⁾ or Conventional

⁽¹⁾ P-RNAV recommended

OST 3A

OST VOR/DME – CMP VOR/DME.

MEA: OST VOR/DME – CMP VOR/DME: 5000 FT

Path Terminator	Waypoint Name	Track °Mag	Turn Direction	Altitude Constraint	Speed Limit	Recommended Navaid	Bearing/Range to Navaid	Navigation Performance
IF	OST	-	-	-	230	-	-	B-RNAV ⁽¹⁾ or Conventional
HM	CMP	017°	-	-	230	-	-	B-RNAV ⁽¹⁾ or Conventional

⁽¹⁾ P-RNAV recommended**OST 3B**

OST VOR/DME – ROM VOR/DME.

MEA: OST VOR/DME – ROM VOR/DME: 4500 FT

Path Terminator	Waypoint Name	Track °Mag	Turn Direction	Altitude Constraint	Speed Limit	Recommended Navaid	Bearing/Range to Navaid	Navigation Performance
IF	OST	-	-	-	230	-	-	B-RNAV ⁽¹⁾ or Conventional
HM	ROM	088°	-	-	230	-	-	B-RNAV ⁽¹⁾ or Conventional

⁽¹⁾ P-RNAV recommended**SIPRO 3B**

SIPRO – FRS VOR/DME – MAKAG – CMP VOR/DME.

MEL/MEA: SIPRO – FRS VOR/DME: FL 110 ; FRS VOR/DME – MAKAG: FL 100; MAKAG – RDL 116/D15 CMP VOR/DME: 6000 FT; RDL 116/D15 CMP VOR/DME – CMP VOR/DME: 5000 FT

Path Terminator	Waypoint Name	Track °Mag	Turn Direction	Altitude Constraint	Speed Limit	Recommended Navaid	Bearing/Range to Navaid	Navigation Performance
IF	SIPRO	-	-	-	270	-	-	B-RNAV ⁽¹⁾ or Conventional
TF	FRS	302°	R	-	250	-	-	B-RNAV ⁽¹⁾ or Conventional
TF	MAKAG	314°	L	-	230	-	-	B-RNAV ⁽¹⁾ or Conventional
HM	CMP	296°	-	-	230	-	-	B-RNAV ⁽¹⁾ or Conventional

⁽¹⁾ P-RNAV recommended**NOTA:** Le tabelle sopra riportate vengono fornita a carattere sperimentale e solo per scopi di codifica dei dati.**REMARK:** The above tables are provided on trial basis and for data coding purposes only.

REF: Guidance Material for the Design of Terminal Procedures for Area Navigation, EUROCONTROL, ed. 3.0 03/2003



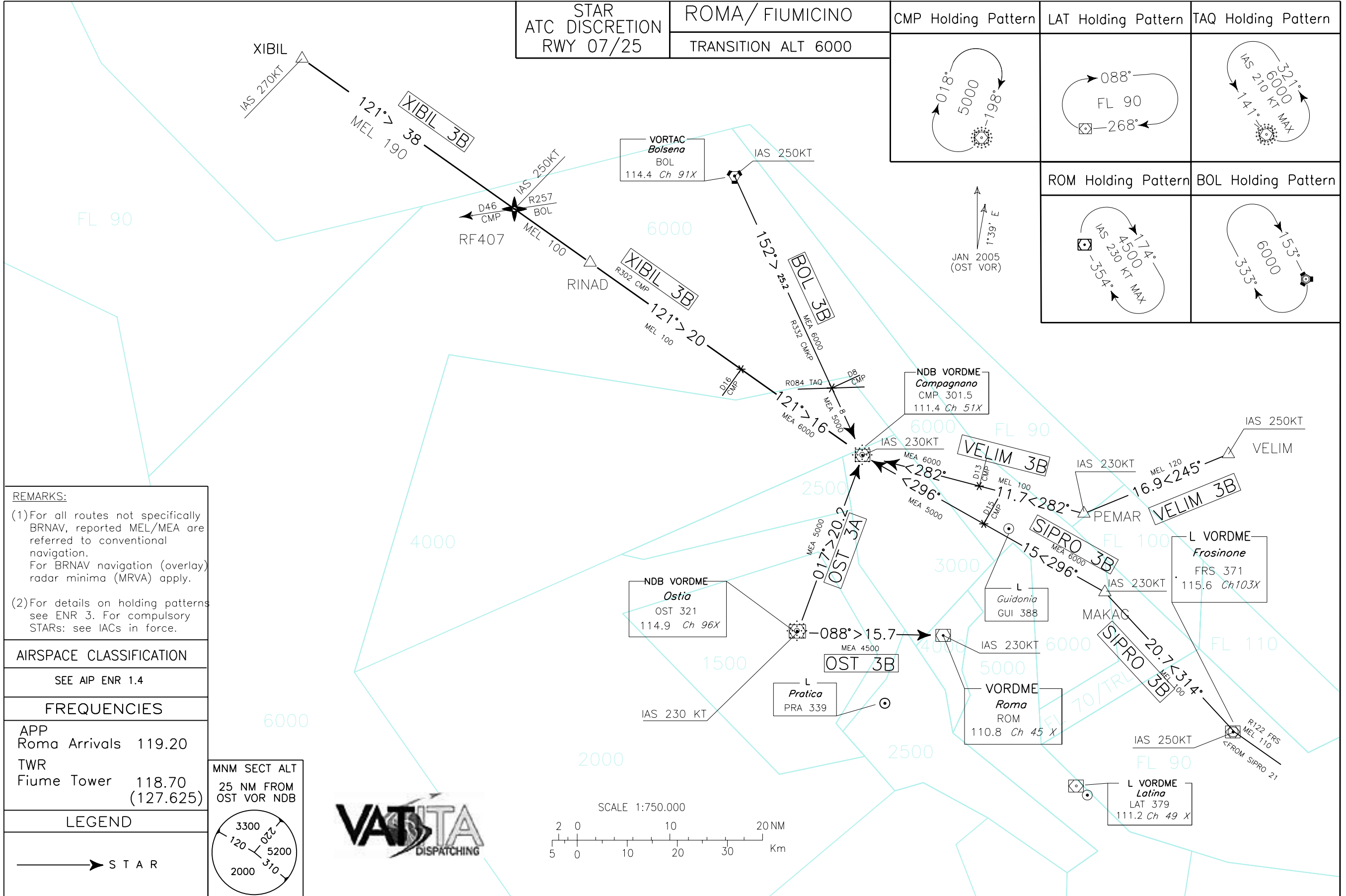
Waypoints Table formatted according ARINC 424 standards

Waypoint	Latitude	Longitude
BOL	N42370627	E012025542
CMP	N42072549	E012225319
FRS	N41383184	E013174184
GOLPO	N42025666	E012074131
MAKAG	N41532587	E012582907
MIKSO	N42012774	E012111158
OST	N41481375	E012141503
PEMAR	N42014701	E012551000
RF406	N41573425	E012041284
RF407	N42323856	E011310034
RINAD	N42271170	E011422060
ROM	N41481650	E012351710
SIPRO	N41264567	E013404990
TAQ	N42125419	E011435735
VALMA	N41343801	E011251700
VELIM	N42083231	E013155457
XIBIL	N42474919	E010590208



STAR ATC DISCRETION RWY 07/25	ROMA/ FIUMICINO	CMP Holding Pattern	LAT Holding Pattern	TAQ Holding Pattern
	TRANSITION ALT 6000			

ROM Holding Pattern	BOL Holding Pattern

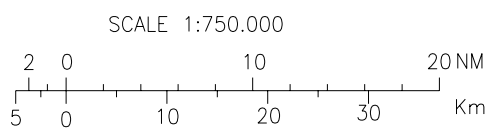
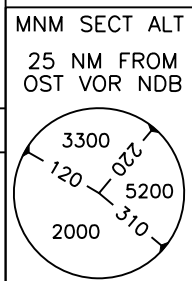


JAN 2005
(OST VOR)

CHANGE: NEW AD SECTION

REMARKS:
 (1) For all routes not specifically BRNAV, reported MEL/MEA are referred to conventional navigation. For BRNAV navigation (overlay) radar minima (MRVA) apply.
 (2) For details on holding patterns see ENR 3. For compulsory STARs: see IACs in force.

AIRSPACE CLASSIFICATION
SEE AIP ENR 1.4
FREQUENCIES
APP Roma Arrivals 119.20
TWR Fiume Tower 118.70 (127.625)
LEGEND
STAR



STAR RWY07/25 (ATC Discretion)

In aggiunta alle LINK ROUTES, quando le RWYs 07/25 sono in uso, sono disponibili a discrezione ATC solo le seguenti STAR.
In addition to the LINK ROUTES, when RWYs 07/25 are in use, only following STAR are available at ATC discretion.

XIBIL 3B

XIBIL – RF407 – RINAD – CMP VOR/DME.

MEL/MEA: XIBIL – RF407⁽²⁾: FL 190; RF407⁽²⁾ – RINAD – RDL 301/D16 CMP VOR/DME: FL 100; RDL 301/D16 CMP VOR/DME – CMP VOR/DME: 6000 FT

Path Terminator	Waypoint Name	Track °Mag	Turn Direction	Altitude Constraint	Speed Limit	Recommended Navaid	Bearing/Range to Navaid	Navigation Performance
IF	XIBIL	-	-	-	270	-	-	B-RNAV ⁽¹⁾ or Conventional
TF	RF407	121°	-	-	250	-	-	B-RNAV ⁽¹⁾ or Conventional
TF	RINAD	121°	-	-	250	-	-	B-RNAV ⁽¹⁾ or Conventional
HM	CMP	121°	-	-	230	-	-	B-RNAV ⁽¹⁾ or Conventional

⁽¹⁾ P-RNAV recommended⁽²⁾ For conventional navigation performance RF407 is replaced by RDL 302/D46 CMP VOR/DME or INT RDL 258 BOL VOR/RDL 302 CMP VOR**VELIM 3B**

VELIM – PEMAR – CMP VOR/DME.

MEL/MEA: VELIM – PEMAR: FL 120; PEMAR – RDL 101/D13 CMP VOR/DME: FL 100; RDL 101/D13 CMP VOR/DME – CMP VOR/DME: 6000 FT

Path Terminator	Waypoint Name	Track °Mag	Turn Direction	Altitude Constraint	Speed Limit	Recommended Navaid	Bearing/Range to Navaid	Navigation Performance
IF	VELIM	-	-	-	250	-	-	B-RNAV ⁽¹⁾ or Conventional
TF	PEMAR	245°	R	-	230	-	-	B-RNAV ⁽¹⁾ or Conventional
HM	CMP	282°	-	-	230	-	-	B-RNAV ⁽¹⁾ or Conventional

⁽¹⁾ P-RNAV recommended**BOL 3B**

BOL VORTAC – CMP VOR/DME.

MEA: BOL VORTAC – RDL 332/D8 CMP VOR/DME: 6000 FT; RDL 332/D8 CMP VOR/DME – CMP VOR/DME: 5000 FT

Path Terminator	Waypoint Name	Track °Mag	Turn Direction	Altitude Constraint	Speed Limit	Recommended Navaid	Bearing/Range to Navaid	Navigation Performance
IF	BOL	-	-	-	250	-	-	B-RNAV ⁽¹⁾ or Conventional
HM	CMP	152°	-	-	230	-	-	B-RNAV ⁽¹⁾ or Conventional

⁽¹⁾ P-RNAV recommended**OST 3A**

OST VOR/DME – CMP VOR/DME.

MEA: OST VOR/DME – CMP VOR/DME: 5000 FT

Path Terminator	Waypoint Name	Track °Mag	Turn Direction	Altitude Constraint	Speed Limit	Recommended Navaid	Bearing/Range to Navaid	Navigation Performance
IF	OST	-	-	-	230	-	-	B-RNAV ⁽¹⁾ or Conventional
HM	CMP	017°	-	-	230	-	-	B-RNAV ⁽¹⁾ or Conventional

⁽¹⁾ P-RNAV recommended

OST 3B

OST VOR/DME – ROM VOR/DME.

MEA: OST VOR/DME – ROM VOR/DME: 4500 FT

Path Terminator	Waypoint Name	Track °Mag	Turn Direction	Altitude Constraint	Speed Limit	Recommended Navaid	Bearing/Range to Navaid	Navigation Performance
IF	OST	-	-	-	230	-	-	B-RNAV ⁽¹⁾ or Conventional
HM	ROM	088°	-	-	230	-	-	B-RNAV ⁽¹⁾ or Conventional

⁽¹⁾ P-RNAV recommended**SIPRO 3B**

SIPRO – FRS VOR/DME – MAKAG – CMP VOR/DME.

MEL/MEA: SIPRO – FRS VOR/DME: FL 110 ; FRS VOR/DME – MAKAG: FL 100; MAKAG – RDL 116/D15 CMP VOR/DME: 6000 FT; RDL 116/D15 CMP VOR/DME – CMP VOR/DME: 5000 FT

Path Terminator	Waypoint Name	Track °Mag	Turn Direction	Altitude Constraint	Speed Limit	Recommended Navaid	Bearing/Range to Navaid	Navigation Performance
IF	SIPRO	-	-	-	270	-	-	B-RNAV ⁽¹⁾ or Conventional
TF	FRS	302°	R	-	250	-	-	B-RNAV ⁽¹⁾ or Conventional
TF	MAKAG	314°	L	-	230	-	-	B-RNAV ⁽¹⁾ or Conventional
HM	CMP	296°	-	-	230	-	-	B-RNAV ⁽¹⁾ or Conventional

⁽¹⁾ P-RNAV recommended**NOTA:** Le tabelle sopra riportate vengono fornita a carattere sperimentale e solo per scopi di codifica dei dati.**REMARK:** The above tables are provided on trial basis and for data coding purposes only.

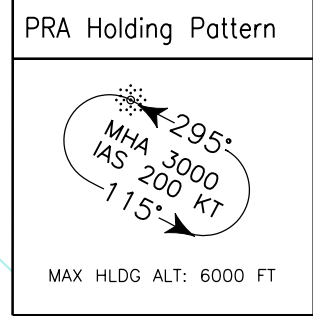
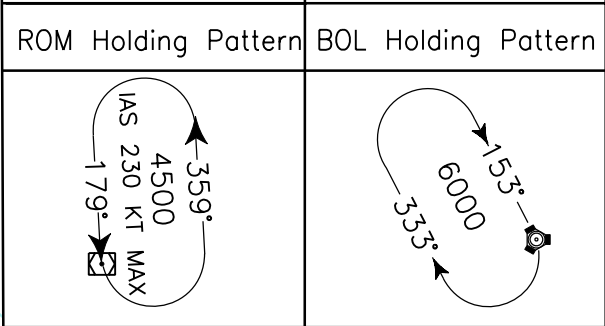
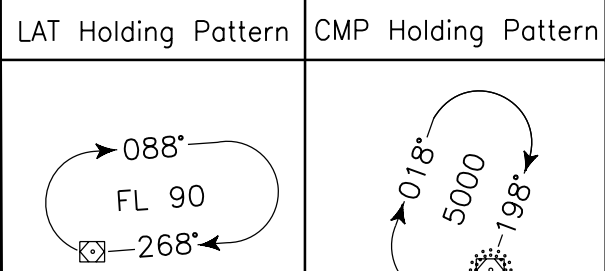
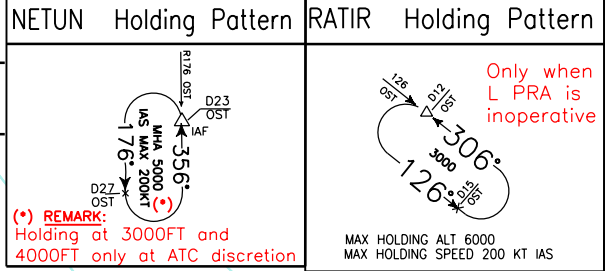
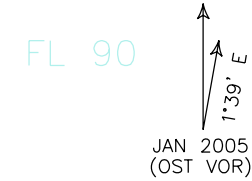
REF: Guidance Material for the Design of Terminal Procedures for Area Navigation, EUROCONTROL, ed. 3.0 03/2003

Waypoints Table formatted according ARINC 424 standards

Waypoint	Latitude	Longitude
BOL	N42370627	E012025542
CMP	N42072549	E012225319
FRS	N41383184	E013174184
MAKAG	N41532587	E012582907
OST	N41481375	E012141503
PEMAR	N42014701	E012551000
RF407	N42323856	E011310034
RINAD	N42271170	E011422060
ROM	N41481650	E012351710
SIPRO	N41264567	E013404990
VELIM	N42083231	E013155457
XIBIL	N42474919	E010590208



STAR ATC DISCRETION RWY 34 L/C/R	ROMA/FIUMICINO TRANSITION ALT 6000	NETUN Holding Pattern	RATIR Holding Pattern	LAT Holding Pattern	CMP Holding Pattern
-------------------------------------	---------------------------------------	-----------------------	-----------------------	---------------------	---------------------



CHANGE: NEW AD SECTION

REMARKS:

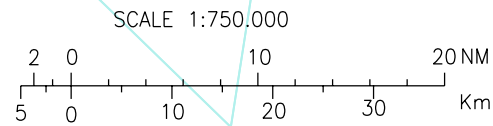
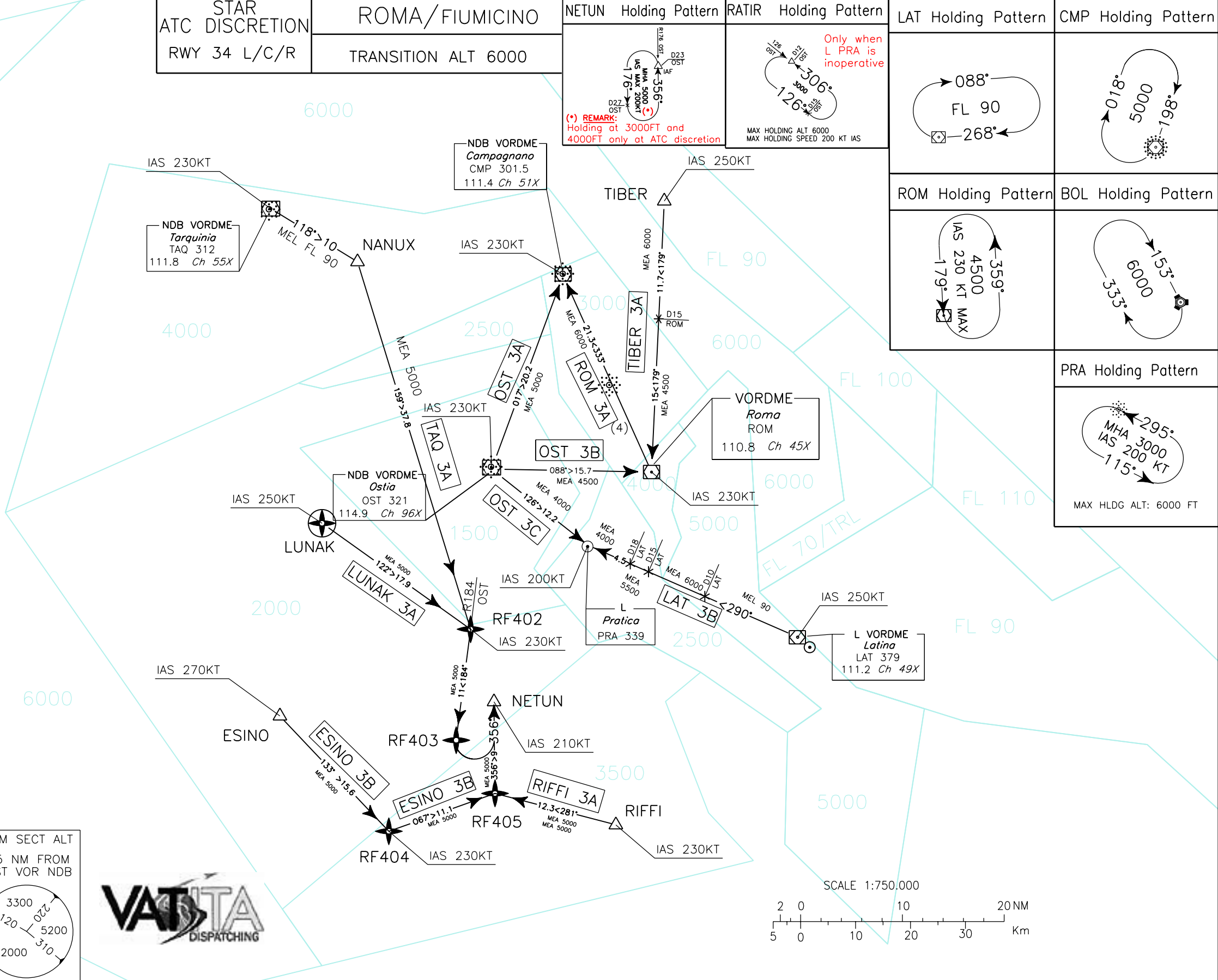
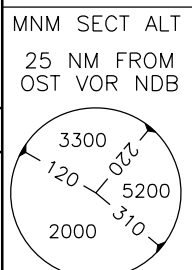
(1) For all routes not specifically BRNAV, reported MEL/MEA are referred to conventional navigation. For BRNAV navigation (overlay) radar minima (MRVA) apply.

(2) For further details on holding patterns see ENR 3.

(3) Compulsory STARs: see IACs in force.

(4) ROM 3A reserved for radiofailure procedure.

AIRSPACE CLASSIFICATION
SEE AIP ENR 1.4
FREQUENCIES
APP Roma Arrivals 119.20
TWR Fiume Tower 118.70 (127.625)
LEGEND
→ STAR



STAR RWY34 (ATC Discretion)

In aggiunta alle LINK ROUTES, quando le RWYs 34 sono in uso, sono disponibili a discrezione ATC solo le seguenti STAR.
In addition to the LINK ROUTES, when RWYs 34 are in use, only following STAR are available at ATC discretion.

LAT 3B

LAT VOR/DME – PRA L.

MEL/MEA: LAT VOR/DME – RDL 290/D10 LAT VOR/DME: FL 90 ; RDL 290/D10 LAT VOR/DME – RDL 290/D15 LAT VOR/DME: 6000 FT;
RDL 290/D15 LAT VOR/DME – RDL 290/D18 LAT VOR/DME: 5500 FT; RDL 290/D18 LAT VOR/DME – PRA L: 4000 FT

Path Terminator	Waypoint Name	Track °Mag	Turn Direction	Altitude Constraint	Speed Limit	Recommended Navaid	Bearing/Range to Navaid	Navigation Performance
IF	LAT	-	-	-	250	-	-	B-RNAV ⁽¹⁾ or Conventional
HM	PRA	290°	-	-	200	-	-	B-RNAV ⁽¹⁾ or Conventional

⁽¹⁾ P-RNAV recommended**TIBER 3A**

TIBER – ROM VOR/DME.

MEA: TIBER – RDL 359/D15 ROM VOR/DME: 6000 FT ; RDL 359/D15 ROM VOR/DME – ROM VORDME: 4500FT

Path Terminator	Waypoint Name	Track °Mag	Turn Direction	Altitude Constraint	Speed Limit	Recommended Navaid	Bearing/Range to Navaid	Navigation Performance
IF	TIBER	-	-	-	250	-	-	B-RNAV ⁽¹⁾ or Conventional
HM	ROM	179°	-	-	230	-	-	B-RNAV ⁽¹⁾ or Conventional

⁽¹⁾ P-RNAV recommended**TAQ 3A**

TAQ VOR/DME – NANUX – RF402 – RF 403 – NETUN.

MEL/MEA: TAQ VOR/DME – NANUX: FL 90; NANUX – RF402 – RF 403 – NETUN: 5000 FT

Path Terminator	Waypoint Name	Track °Mag	Turn Direction	Altitude Constraint	Speed Limit	Recommended Navaid	Bearing/Range to Navaid	Navigation Performance
IF	TAQ	-	-	-	230	-	-	B-RNAV ⁽¹⁾
TF	NANUX	118°	R	-	230	-	-	B-RNAV ⁽¹⁾
TF	RF402	159°	R	-	230	-	-	B-RNAV ⁽¹⁾
TF	RF403	184°	L	-	230	-	-	B-RNAV ⁽¹⁾
HM	NETUN	356°	-	-	210	-	-	B-RNAV ⁽¹⁾

⁽¹⁾ P-RNAV recommended**LUNAK 3A**

LUNAK – RF402 – RF403 – NETUN.

MEL/MEA: LUNAK – RF402: FL 100; RF402 – RF 403 – NETUN: 5000 FT

Path Terminator	Waypoint Name	Track °Mag	Turn Direction	Altitude Constraint	Speed Limit	Recommended Navaid	Bearing/Range to Navaid	Navigation Performance
IF	LUNAK ⁽²⁾	-	-	-	250	-	-	B-RNAV ⁽¹⁾
TF	RF402	122°	R	-	230	-	-	B-RNAV ⁽¹⁾
TF	RF403	184°	L	-	230	-	-	B-RNAV ⁽¹⁾
HM	NETUN	356°	-	-	210	-	-	B-RNAV ⁽¹⁾

⁽¹⁾ P-RNAV recommended⁽²⁾ For ATC reasons WPT LUNAK must be coded as FLY-OVER

RIFFI 3A

RIFFI – RF405 – NETUN.

MEA: RIFFI – RF405 – NETUN: 5000 FT

Path Terminator	Waypoint Name	Track °Mag	Turn Direction	Altitude Constraint	Speed Limit	Recommended Navaid	Bearing/Range to Navaid	Navigation Performance
IF	RIFFI	-	-	-	230	-	-	B-RNAV ⁽¹⁾
TF	RF405	281°	R	-	230	-	-	B-RNAV ⁽¹⁾
HM	NETUN	356°	-	-	210	-	-	B-RNAV ⁽¹⁾

⁽¹⁾ P-RNAV recommended**ESINO 3B**

ESINO – RF404 – RF405 – NETUN.

MEA: ESINO – RF404 – RF405 – NETUN: 5000 FT

Path Terminator	Waypoint Name	Track °Mag	Turn Direction	Altitude Constraint	Speed Limit	Recommended Navaid	Bearing/Range to Navaid	Navigation Performance
IF	ESINO	-	-	-	270	-	-	B-RNAV ⁽¹⁾
TF	RF404	133°	L	-	230	-	-	B-RNAV ⁽¹⁾
TF	RF405	067°	L	-	230	-	-	B-RNAV ⁽¹⁾
HM	NETUN	356°	-	-	210	-	-	B-RNAV ⁽¹⁾

⁽¹⁾ P-RNAV recommended**OST 3A**

OST VOR/DME – CMP VOR/DME.

MEA: OST VOR/DME – CMP VOR/DME: 5000FT

Path Terminator	Waypoint Name	Track °Mag	Turn Direction	Altitude Constraint	Speed Limit	Recommended Navaid	Bearing/Range to Navaid	Navigation Performance
IF	OST	-	-	-	230	-	-	B-RNAV ⁽¹⁾ or Conventional
HM	CMP	017°	-	-	230	-	-	B-RNAV ⁽¹⁾ or Conventional

⁽¹⁾ P-RNAV recommended**OST 3B**

OST VOR/DME – ROM VOR/DME.

MEA: OST VOR/DME – ROM VOR/DME: 4500FT

Path Terminator	Waypoint Name	Track °Mag	Turn Direction	Altitude Constraint	Speed Limit	Recommended Navaid	Bearing/Range to Navaid	Navigation Performance
IF	OST	-	-	-	230	-	-	B-RNAV ⁽¹⁾ or Conventional
HM	ROM	088°	-	-	230	-	-	B-RNAV ⁽¹⁾ or Conventional

⁽¹⁾ P-RNAV recommended

OST 3C

OST VOR/DME – PRA L.

MEA: OST VOR/DME – PRA L: 4000 FT

Path Terminator	Waypoint Name	Track °Mag	Turn Direction	Altitude Constraint	Speed Limit	Recommended Navaid	Bearing/Range to Navaid	Navigation Performance
IF	OST	-	-	-	230	-	-	B-RNAV ⁽¹⁾ or Conventional
HM	PRA	126°	-	-	200	-	-	B-RNAV ⁽¹⁾ or Conventional

⁽¹⁾ P-RNAV recommended**ROM 3A**

ROM VOR/DME – CMP VOR/DME.

MEA: ROM VOR/DME – CMP VOR/DME: 6000 FT

Path Terminator	Waypoint Name	Track °Mag	Turn Direction	Altitude Constraint	Speed Limit	Recommended Navaid	Bearing/Range to Navaid	Navigation Performance
IF	ROM	-	-	-	230	-	-	B-RNAV ⁽¹⁾ or Conventional
HM	CMP	333°	-	-	230	-	-	B-RNAV ⁽¹⁾ or Conventional

⁽¹⁾ P-RNAV recommended**NOTA:** Le tabelle sopra riportate vengono fornite a carattere sperimentale e solo per scopi di codifica dei dati.**REMARK:** The above tables are provided on trial basis and for data coding purposes only.

REF: Guidance Material for the Design of Terminal Procedures for Area Navigation, EUROCONTROL, ed. 3.0 03/2003

Waypoints Table formatted according ARINC 424 standards

Waypoint	Latitude	Longitude
CMP	N42072549	E012225319
ESINO	N41230499	E011474100
LAT	N41322794	E012550445
LUNAK	N41421170	E011521371
NANUX	N42075952	E011554037
NETUN	N41251431	E012153290
OST	N41481375	E012141503
PRA	N41404700	E012271000
RATIR	N41405440	E012265722
RF402	N41321780	E012121102
RF403	N41212054	E012104635
RF404	N41121034	E012022435
RF405	N41161451	E012160313
RIFFI	N41132800	E012315600
ROM	N41481650	E012351710
TAQ	N42125419	E011435735
TIBER	N42145595	E012355640

